



FOREST, FIELDS & SEA

by

CHARLY MEYER



# ABOUT

In the eighties I started to work on one of the first available consumer computers. Later, after the first digital camera hit the market I realized, being a professional photographer, the potential of these new devices. Since the image quality of the early digital cameras was still far below professional level, embedding the digital revolution in my professional career began by scanning my prints with a flatbed scanner and making adjustments in Photoshop.

The next step was taken when I started to scan all my developed films with a large format film scanner. 'Why bother?', you might think. The process was time consuming, the film scanner was an expensive buy and I already had the images on film!

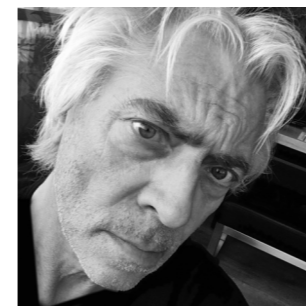
But it was worth it. It was a revelation. Color correction, background adjustment, intensive retouching all with the click of a mouse.

From that point on I enjoyed trying to mix the analog process with the digital process in my professional work.

After my career I had all the time to pursue my creative curiosity.

This artwork is a result of my ongoing interest in the combination of images, devices and software. Although the whole process is digital there is still an image at the base of each work.

Charly Meyer



Copyright © 2022 by Charly Meyer

All rights reserved. This magazine or any portion thereof may not be reproduced or used in any manner whatsoever without the express written permission of the publisher.

Charly Meyer

[www.charlymeyer.com](http://www.charlymeyer.com)

[info@charlymeyer.com](mailto:info@charlymeyer.com)



# The forest

Dark places in the forest hide many mysteries.

Molds explode overnight, first hidden under a bed of leaves but then suddenly exposed to the eye.

Deeper in the forest the stump of an old oak feeds the fungi to grow into their fantastic shapes.





Austropaxillus 140 x 140cm



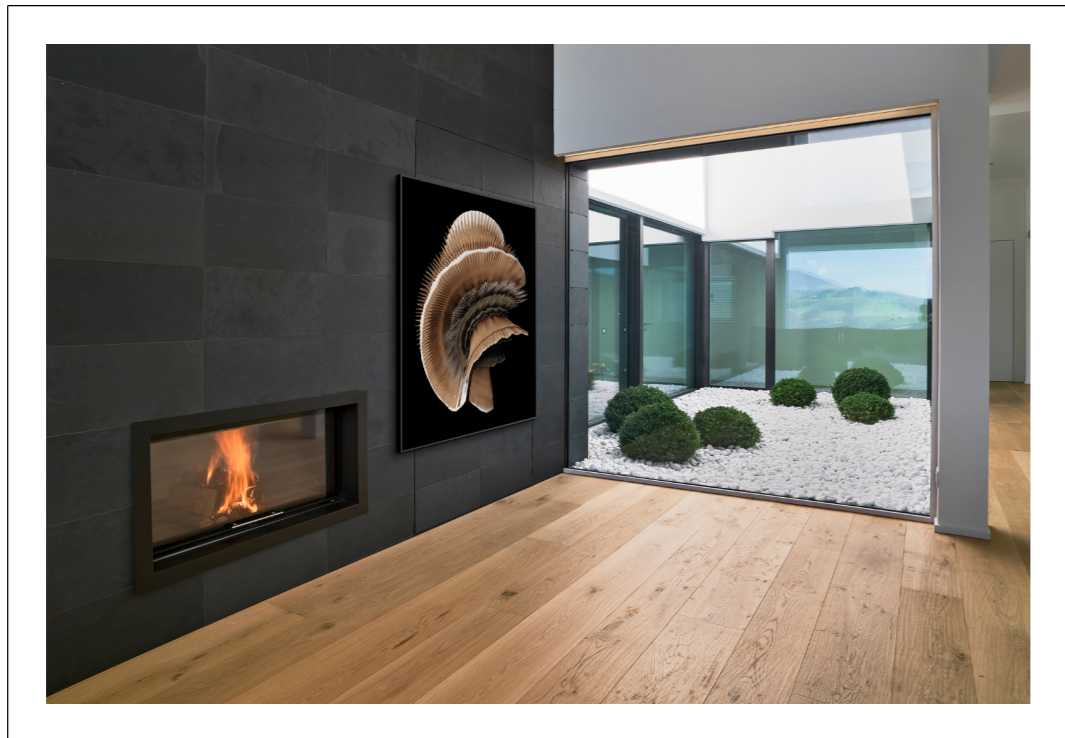




Lentiniellus Cochleatus 140 x 140cm







Trametes Versicolor 140 x 140cm

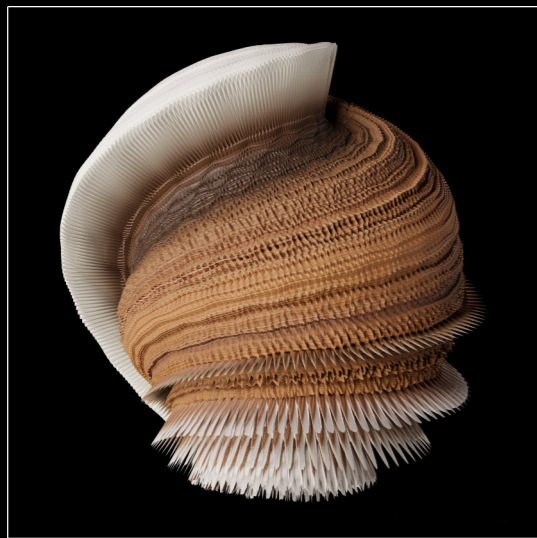




Schizophyllum Commune 140 x 140cm







Daedalea Quercina II 140 x140cm



# The fields

The early morning sun floats over fields where fungi, flowers and edible plants come to life.

A variety of species all different in shape and colour and mostly grown from a single seed, planted by hand or carried by the wind.





Brassica Oleracea 140 x 140cm



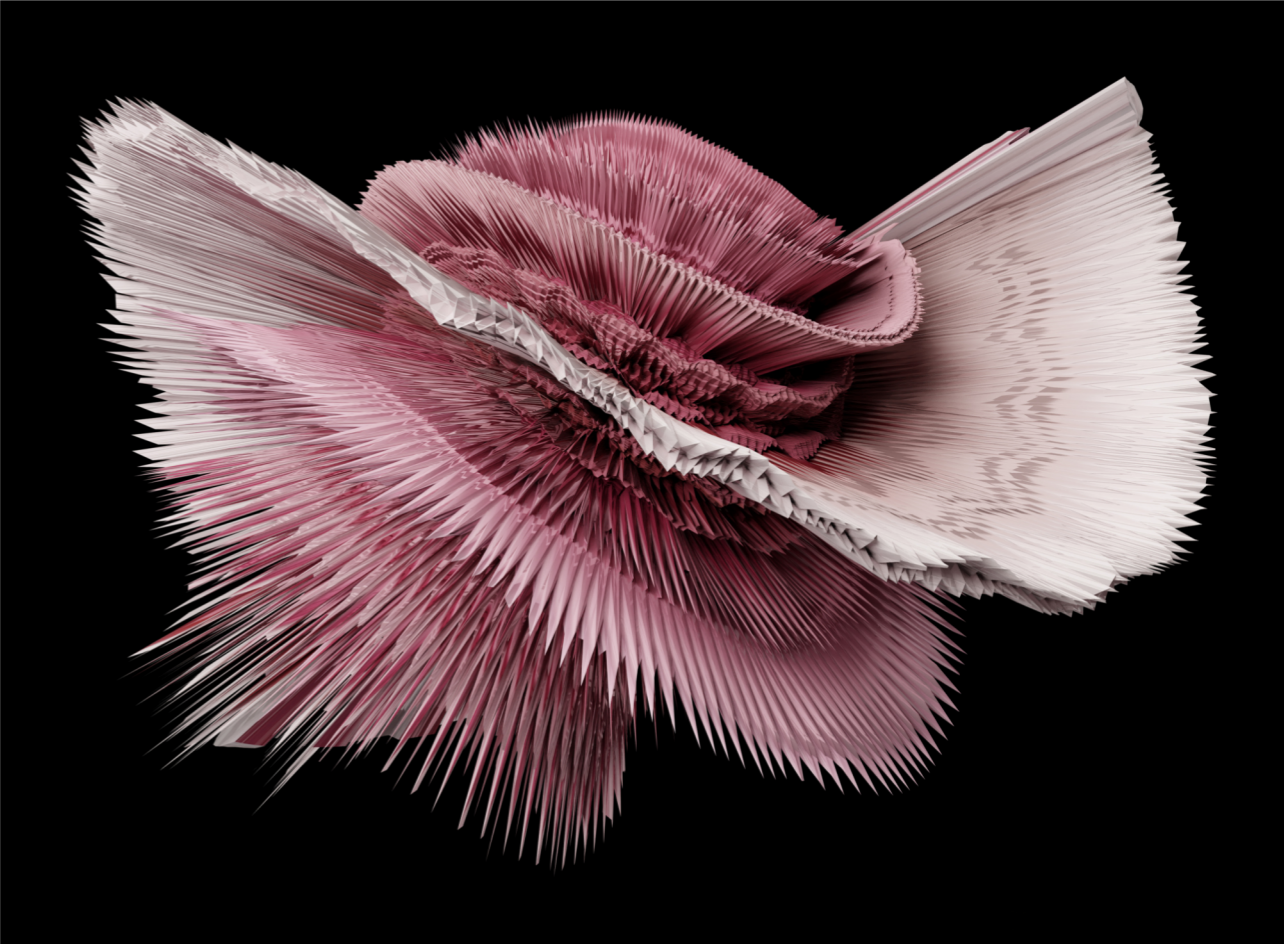




Çınara Scolymus 140 x 140cm







Hygrophorus Capreolarius 135 x 180cm





Cortinarius Rigens 140 x 140cm





# The Sea

Below the wild waves of the sea lies a world unknown.

Aporrhais, Balanus Perforatus, Pteropurpura and many other varieties can only show their beautiful shapes and colors below the surface.

Exposed to air and daylight their beauty will soon be gone.





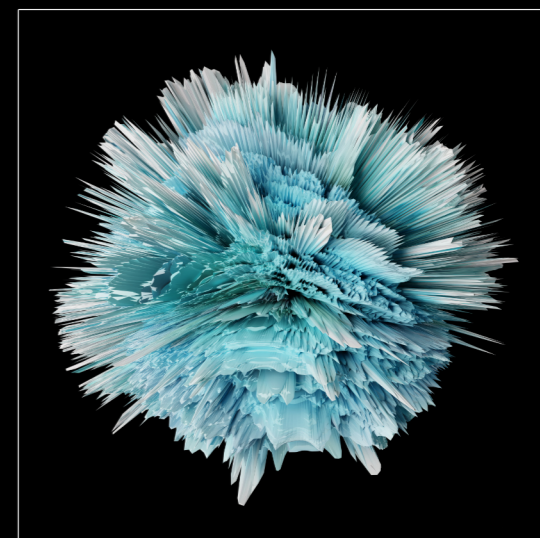
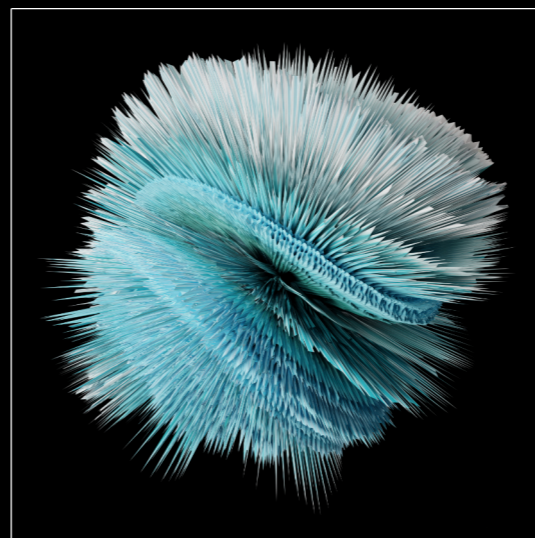
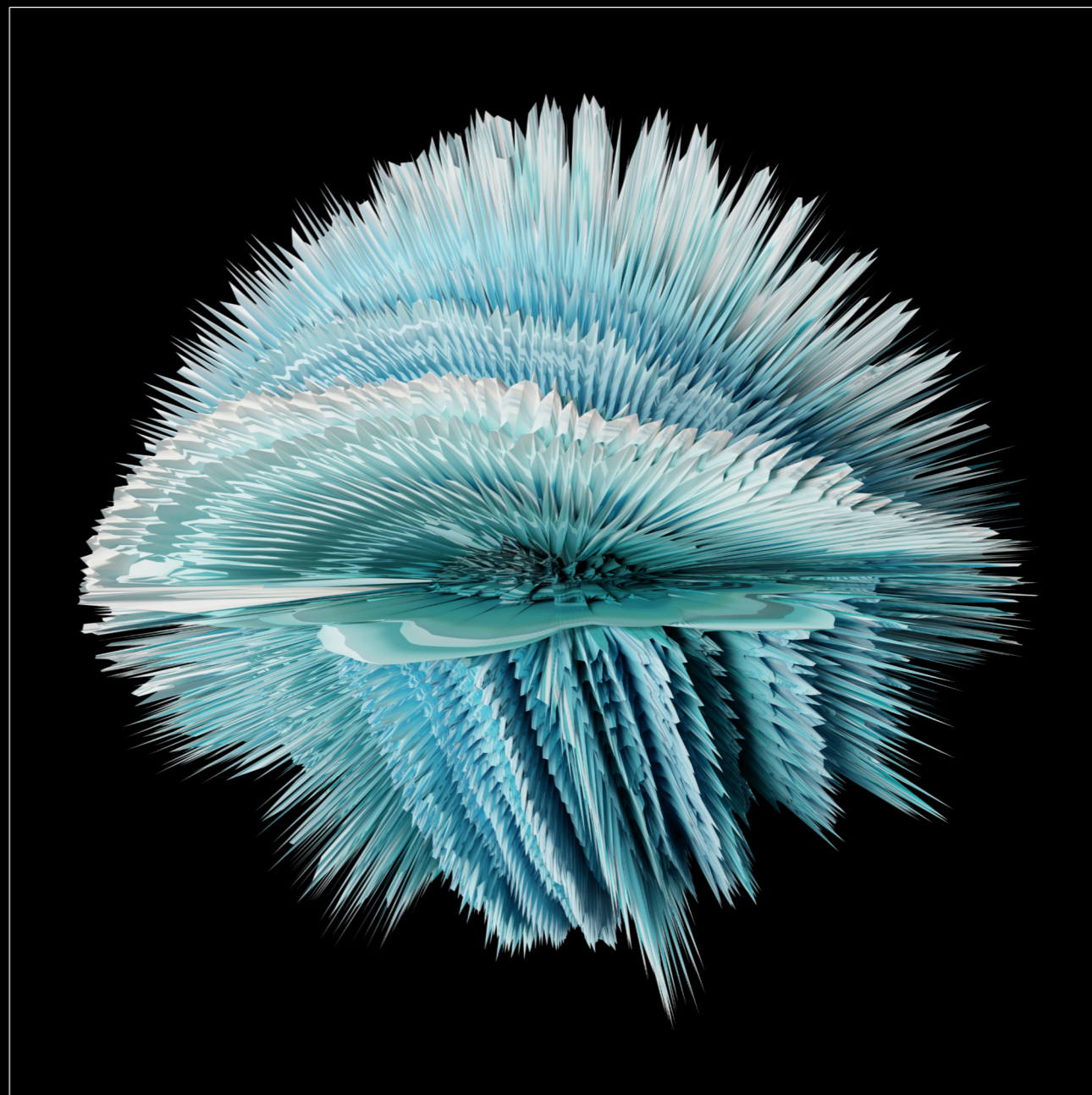
*Pectinia Alcornis* 140 x 140cm







Actinioria II 140 x 140cm







Aporrhais I 140 x 165cm





Argonautidae | 140 x 140cm







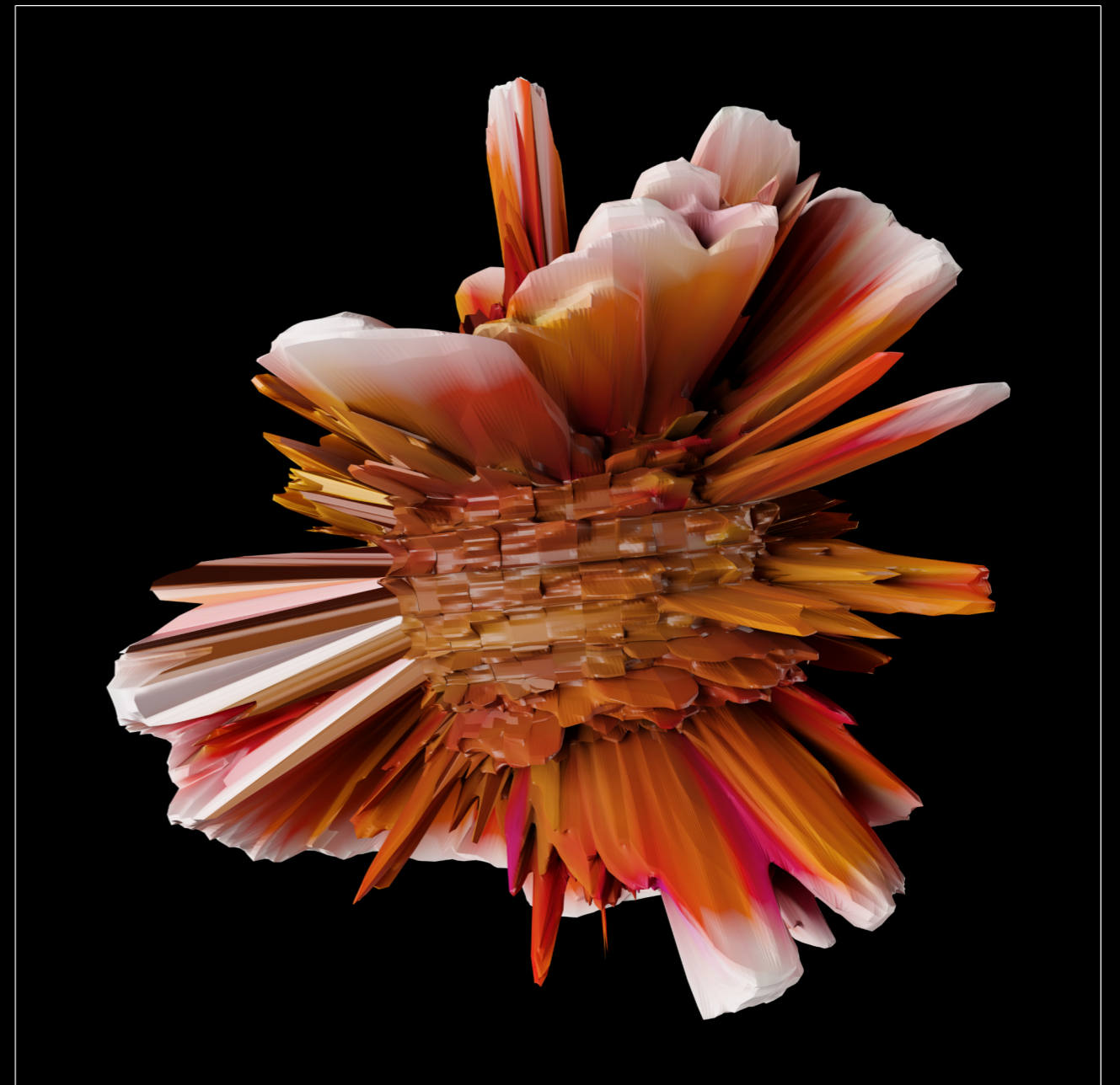
Balanus Perforatus | 140 x 140cm







Pteropurpura | 140 x 140cm

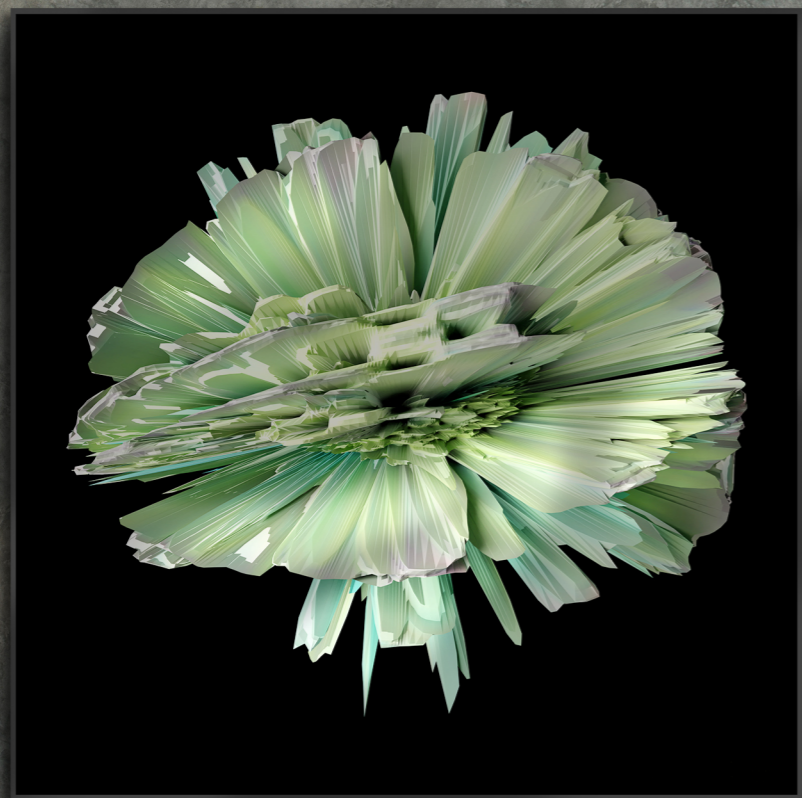




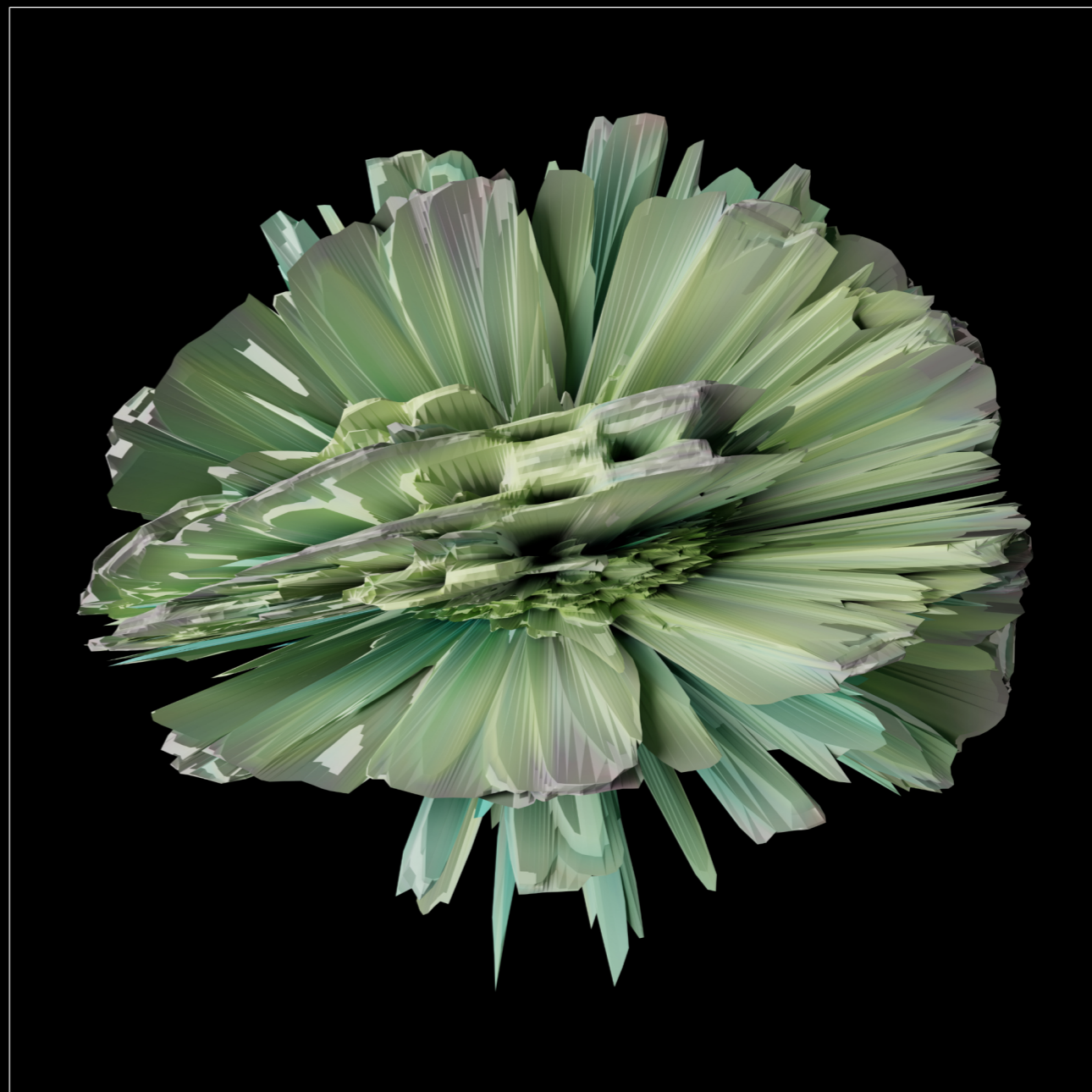


Pterois Volitans 120 x 160cm





Turbinaria Beniformis 140 x 140cm





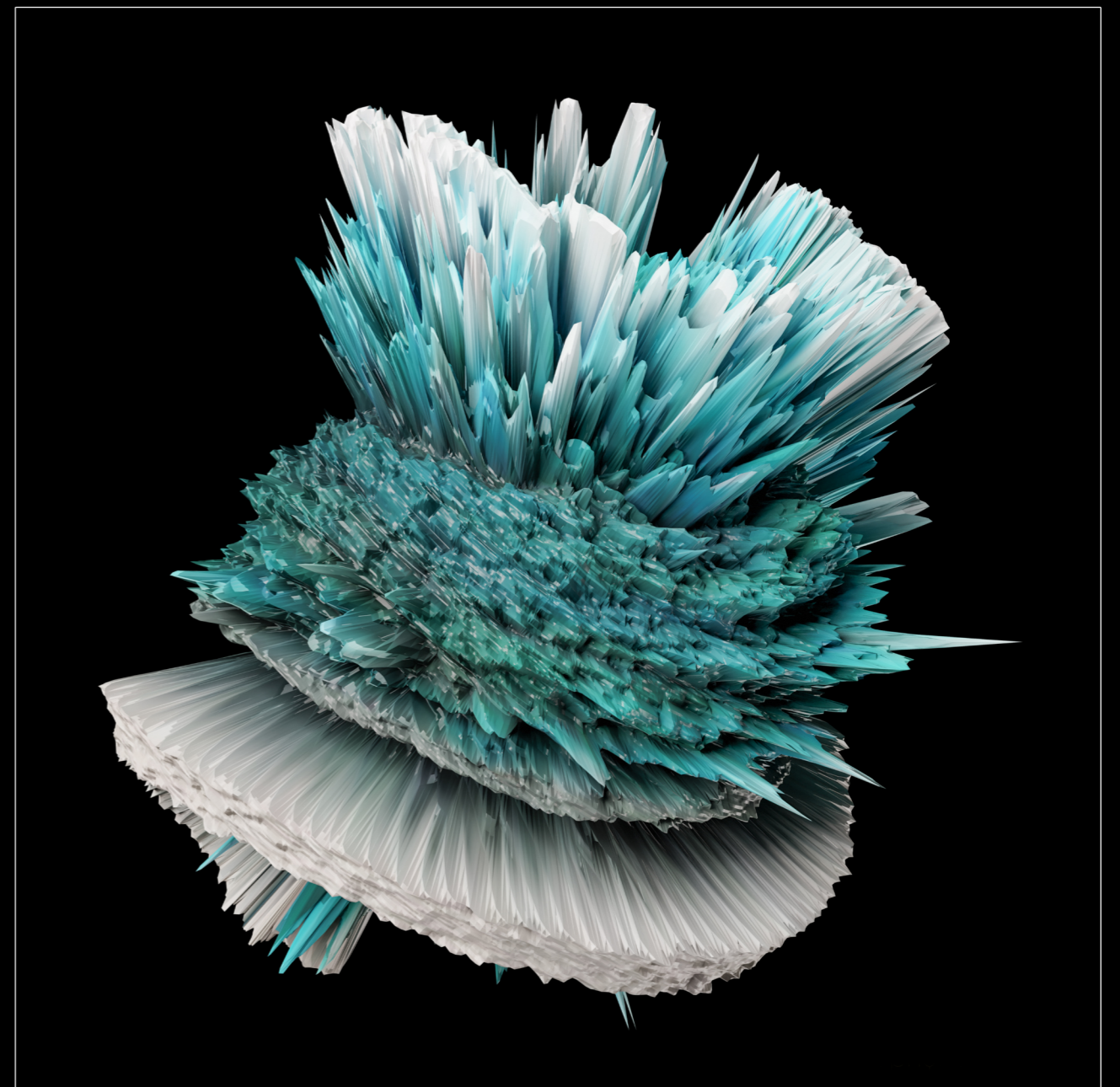


Ostrea | 140 x 140cm





Catalophyllia Jardinei 140 x 140cm





# Buy Art

I do not sell online and I do not hold stock.

If you like a specific artwork, please use the contact form on my website [www.charlymeyer.com](http://www.charlymeyer.com) for questions on availability.





FOREST, FIELDS & SEA

Limited editions

[www.charlymeyer.com](http://www.charlymeyer.com)

Copyright: Charly Meyer, The Netherlands